

NMSU Office of Service Learning and Civic Engagement: An Institutional Concept

Prepared by Service Learning Workgroup for
President Barbara Couture (March 2010)



Key Points of the Presentation

- Who we are
- Scholarly Engagement
- Gaps in New Mexico
- Benefits of service learning
- Establishment of NMSU Office of Service Learning and Civic Engagement

The Service Learning Workgroup

- NMSU
- School districts
- Local government
- Non-profit community-based organizations
- Community members and business

Service Learning Is

- According to the National Community Service Act of 1990...
- Service Learning is a teaching method...
 - “under which students learn and develop through active participation in...thoughtfully organized service experiences that meet actual community needs”.
 - That is integrated into the students’ academic curriculum or provides structured time for a student to think, talk, or write about what the student did and saw during the service activity”.



We All Agree that NMSU

Provides a value-added infrastructure to the state, designed to bring service-based scholarship to the most pressing needs of individuals and communities, thereby creating an awareness of service and helping society close the “gaps”.

Principles of Engagement

- Partnership
- Mutually beneficial outcomes
 - Addresses a community-identified need
 - Through an intellectual activity of importance
- Reciprocity
 - Enhances community capacity
 - Enhances student learning and/or research studies
- Knowledge exchange relationship is a 2-way street

Carnegie Connection

“Community Engagement describes the collaboration between higher education institutions and their larger communities for the mutually beneficial exchange of knowledge and resources in a context of partnership and reciprocity”.

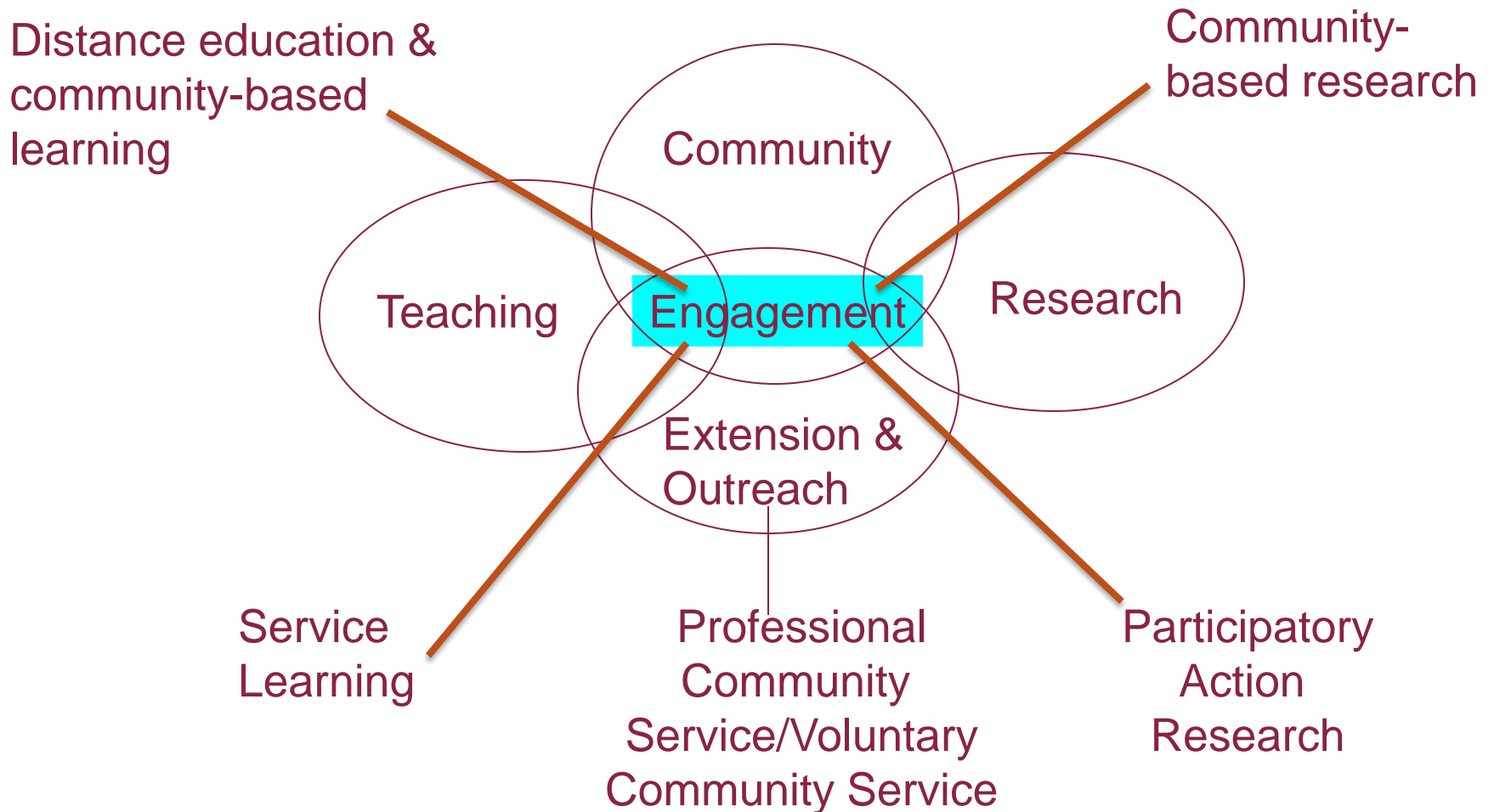
Carnegie Foundation for the Advancement of Teaching, 2006

Good News: NMSU's Current Promotion & Tenure Policy

Section 5.90.4.2 Scholarship and Creative Activity

- Scholarship of Discovery
- Scholarship of Teaching
- Scholarship of Engagement (Application)
- Scholarship of Integration

NMSU Community Engagement Role



This story really starts with some of “The Gaps” in our community

- Health care
- PK - 20
- Regional economies
 - Rural communities
 - “New Energy Economy”
- Poverty/vulnerable populations
 - Hunger
 - Resource management
 - Workforce development

New Mexico Children and Youth

- Total Population: 1,954,599
- Child Population: 508,160 (26%, 18 yrs & below)
 - Hispanic: 53%
 - White, non-Hispanic: 30%
 - Native American: 12%
 - African-American: 3%
 - Asian: 1%
 - Native Hawaiian/OPI*: 0.1%
 - Some other race: 18%
 - Two or more races: 6%

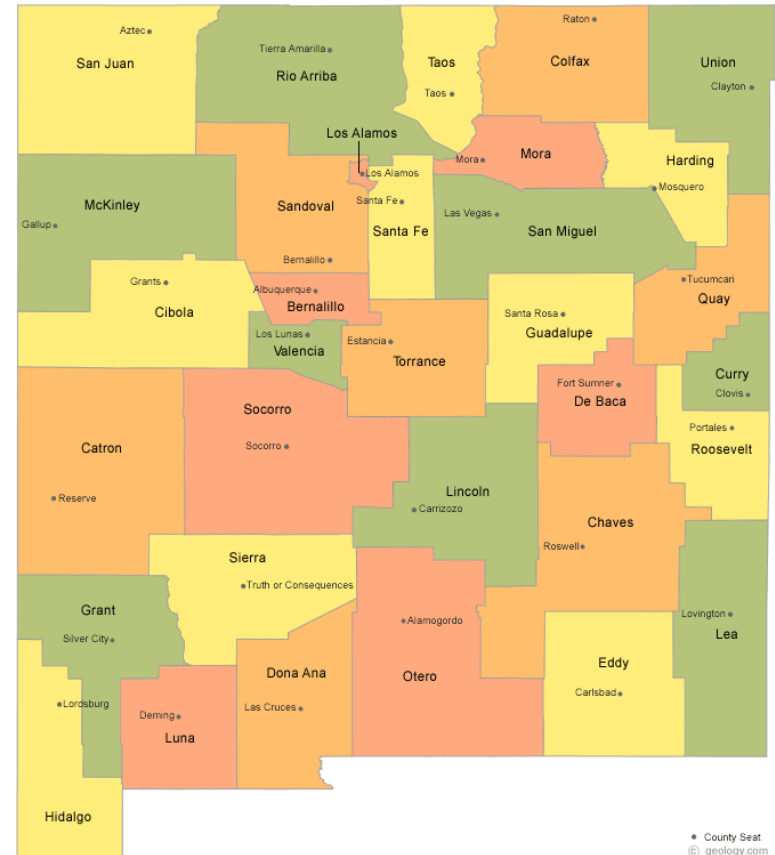
* Other Pacific Islander

Source: 2006 American Community Survey



The Challenge and Opportunity

How can we engage New Mexico State University, and our faculty in building innovative capacity in every region and community in New Mexico... starting right here in our back yard?



Benefits of Service Learning to our Community

- Fosters an ethic of service and civic participation in students
- Impacts on the community, students, and faculty
- Allows needs of community to be met
- Creates potential for additional partnerships and collaboration

Benefits of Service Learning for the Student

- Increases retention
- Makes learning more relevant
- Develops civic responsibility
- Provides real life experiences



Benefits of Service Learning to our Faculty

- Promotes innovative and creative approaches to teaching
- Renews love of teaching
- Encourages multidisciplinary activities
- Provides opportunities for new areas of research
- Links personal values to one's profession

Community Priority Focus Areas

- Increased involvement and progress by middle school and high school students
- Increased public involvement with programs supporting the sustainability of food systems
- Improved health and wellness
- Increased preparedness of the future work force

Community Outcome Priorities

- Create Youth-Adult Partnerships with NMSU, local government, the public school districts, and community-based organizations
- Improved high school retention and graduation rates and college attendance among youth from NM
- Higher rates of education among youth from low-income, disadvantaged, and marginalized communities in the region

The Bottom Line: Engaged Scholarship

Principles of Engagement

+

Standards of Scholarship

=

Scholarly Engagement

With the definition of Engaged Scholarship in mind, we propose

The NMSU Office of
Service Learning
and Civic Engagement

Strategic Focus of Office of Service Learning and Civic Engagement

Vision Statement - Creation of school-based and community-based programs through which citizenship, academic subjects, skills and values are taught and adopted in the community.

NMSU Office of Service Learning and Civic Engagement Goals

- Institutionalize service learning and civic engagement in all colleges and campuses
- Educate community about NMSU's capacity for Service Learning and Civic Engagement
- Enhance learning opportunities for NMSU students

Primary Functions of NMSU Office of Service Learning and Civic Engagement

- Track student service learning hours
- Identify service learning opportunities in community
- Coordinate service learning opportunities with faculty and students
- Establish criteria for classes with service learning designation
- Promote service learning opportunities across campuses

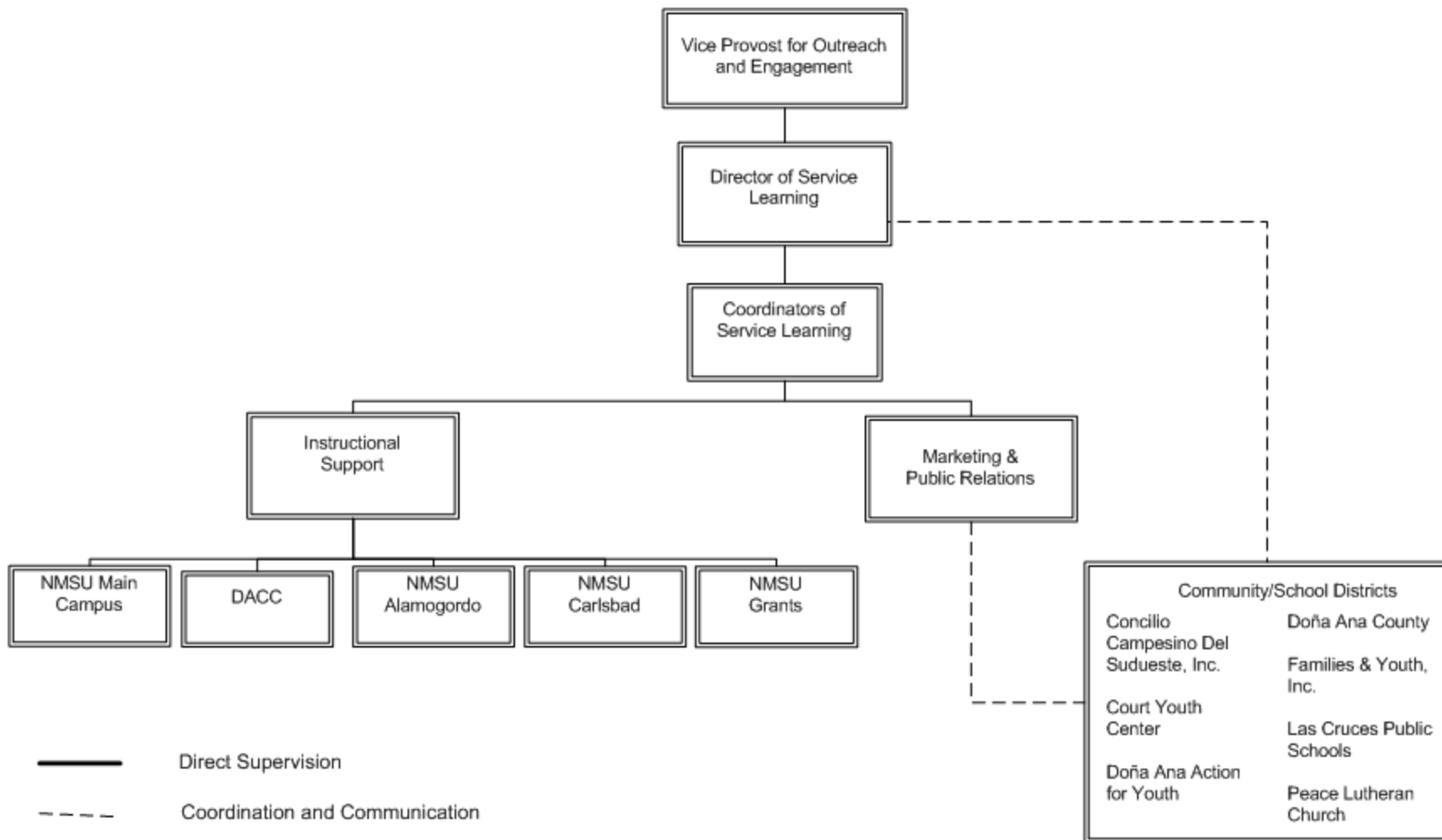
Primary Functions of NMSU Office of Service Learning and Civic Engagement

- Identify and pursue funding opportunities
- Conduct and support faculty and community service learning workshops
- Manage AmeriCorps and service learning work-study activities
- Manage NMSU Service Learning and Civic Engagement marketing and Public Relations
- Prepare and submit annual reporting

Proposed Funding for NMSU Office of Service Learning and Civic Engagement

- Short-term
 - Contracts and grants
 - Development funds: Foundations and private donors
 - In-kind support with community partners
- Long-term
 - University supported formula funding model
 - State RPSP fund
 - Federal special project funding

Proposed Organizational Chart for NMSU's Office of Service Learning and Civic Engagement



What We Need from the President's Office?

- Agree in principle with our strategic focus for the NMSU Office of Service Learning and Civic Engagement
- Work with deans, faculty, students, and local communities to finalize an Action Plan by June 1, 2010
- Establish the NMSU Office of Service Learning and Civic Engagement on July 1, 2010